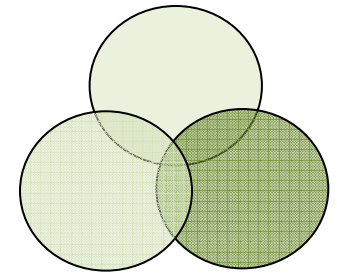


A New Mining Educational Model: UBC Mining Engineering, New Gold Inc. and the Skeetchestn and Tk'emlups First Nations



http://newgold.com/Theme/NewGold/files/documents_financials/AR08/operational-highlights/new-afton-2/index.html

**Dawn Mills, Resident Scholar Mining and Communities
Malcolm Scoble Hallbauer Chair in Mining and Sustainability**

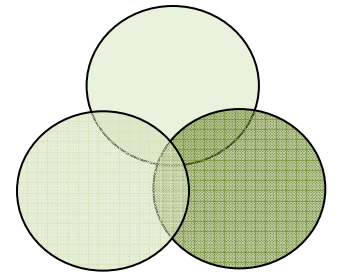
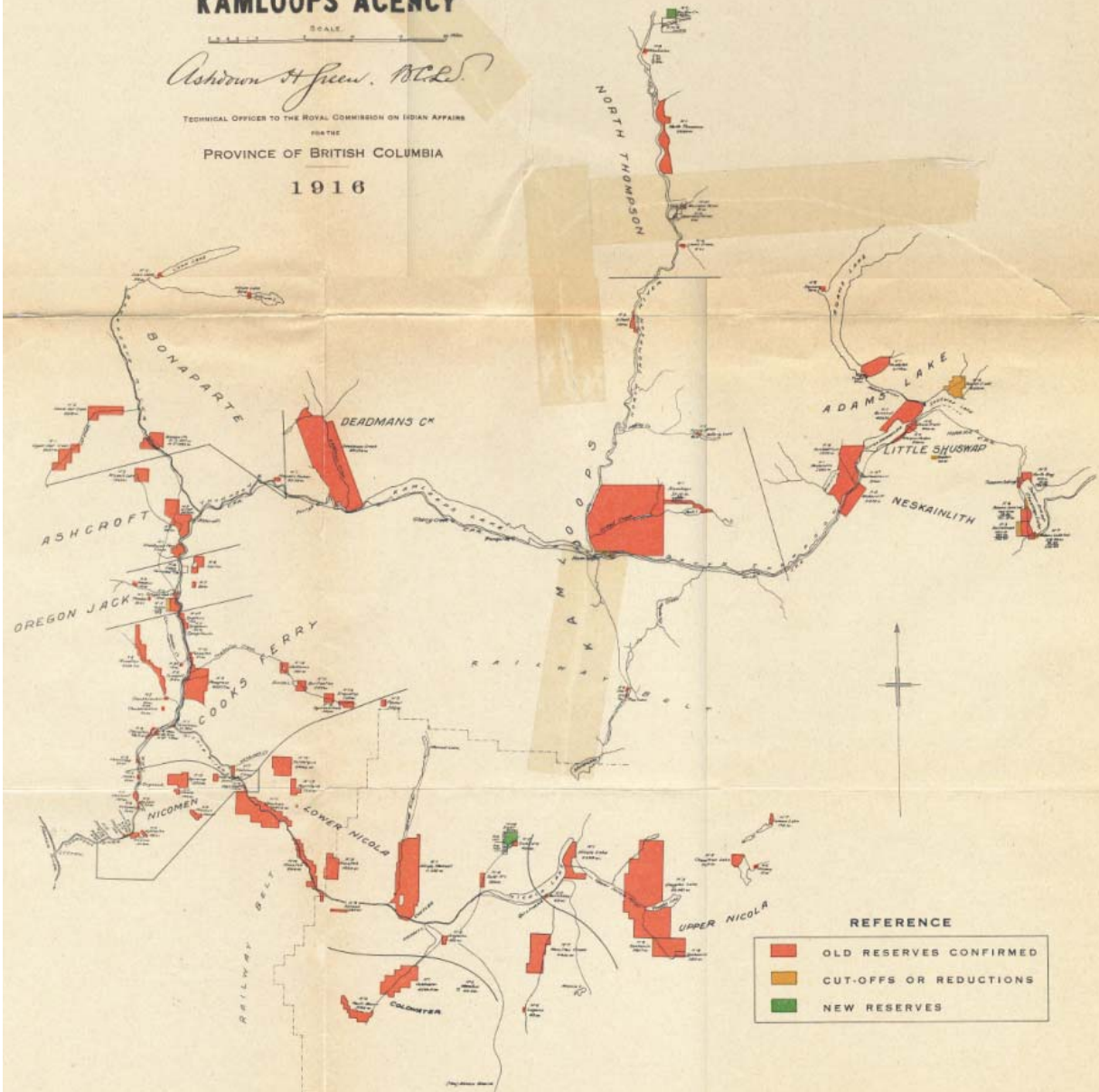
UBC Norman B. Keevil Institute of Mining Engineering

KAMLOOPS AGENCY

SCALE
Ashdown & Green, B.C.L.

TECHNICAL OFFICER TO THE ROYAL COMMISSION ON INDIAN AFFAIRS
FOR THE
PROVINCE OF BRITISH COLUMBIA

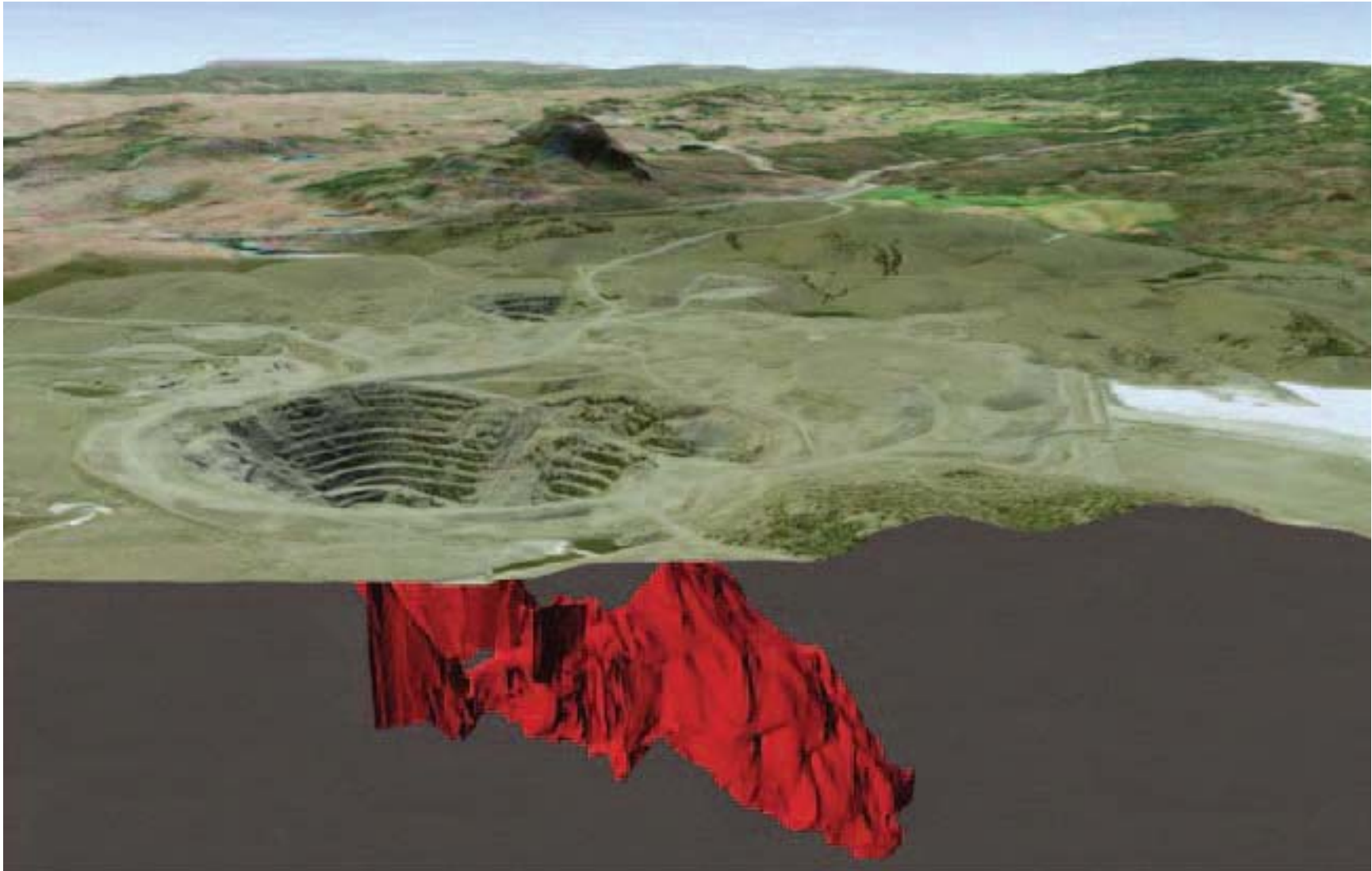
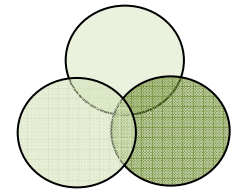
1916



New Afton Mine, New Gold Inc.

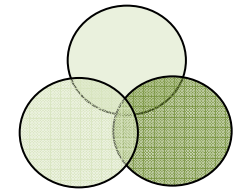
New Afton Cu-Au mine:

- a brownfield mining project
- underground below an old open pit mine



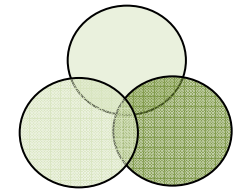


**UBC, First Nations and New Gold meeting at the New Afton Mine, April 2009.
(L to R: Don Ryan, Malcolm Scoble, Linda Thomas, Martha Manual, Dawn Mills
and Olga Druecker)**



Objectives

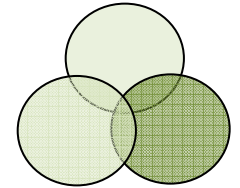
- 50% time spent in the mine and 50% in its 2 communities
- provide a holistic learning experience for the student in:
 - Mining engineering design and planning for Block Caving ore extraction and processing methods
 - First Nations rights and title, consultation, inclusion, and socio-economic development
 - Human resources and environmental management.
- student help in First Nation communities (with a particular focus on youth) to develop an understanding of the mining and environmental management process



Objectives continued

- assist the mine to define the mine HR needs (in terms of occupational classes and numbers, skills and training needs and organization) as it moves into production thru its life cycle
- assist the First Nations communities in building an understanding of these mine human resources and skills-training needs
- attempt to summarize how the First Nations communities view the perceived opportunities for career development within the mine
- consider the means to encourage a motivation for education and training within First Nations community youth
- consider the related economic development opportunities between New Gold Inc, at its New Afton Mine, and the two First Nation Communities

Thank you!



New Gold Inc. : New Gold - New Afton Skeetchestn & Tk'emlups

Dawn Mills, Resident Scholar Mining and Communities
Malcolm Scoble Hallbauer Chair in Mining and Sustainability

UBC Norman B. Keevil Institute of Mining Engineering

Kamloops - March 24, 2010